



Bulletin No. RH-12/93 (UK)

Neoprene Hangers

Series RH/RHD



EXCLUSIVE—
COLOR
CODED

Effective Isolation for Piping or Suspended Equipment

Series "RH and RHD" hangers are molded in colored oil resistant neoprene. This unique color coding makes it easy to identify capacity – simplify stocking – prevent installation errors. Hanger elements can also be molded in other elastomers to meet specific requirements.

Available in 4 sizes – 5 Durometers

Load Range – 10 lbs. to 4,000 lbs

Deflections to 1/4" with type RH
to 1/2" with type RHD

Molded in colored oil-resistant neoprene

5 colors for error free identification

Typical Applications

Air Handling Units Fans

Piping Suspended Ceilings

To Specify:

Vibration hangers shall consist of a steel housing and isolation element molded entirely of colored oil-resistant neoprene stock for easy identification of capacity. The hangers shall be the double deflection type "RHD" as manufactured by Vibration Mountings and Controls, Inc., Bloomington, N.J. and as supplied by EMTEC Products Limited

TYPE RH/RHD

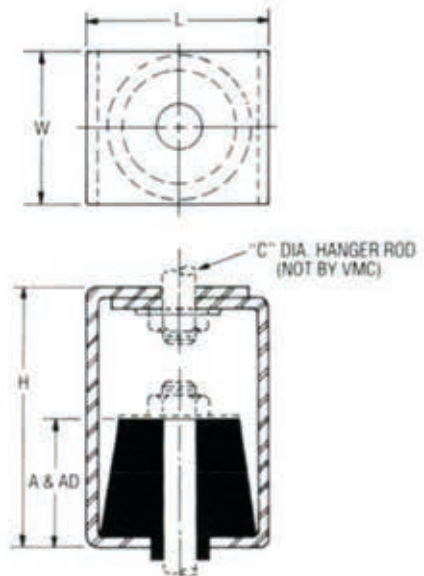


Dimensions: ins. (mm)

TYPE	L	W	H	A*	AD*	C
RH-1 or RHD-1	2 1/4" (57.2)	2" (50.8)	3" (76.2)	1 1/8" (28.6)	1 1/8" (35.0)	3/8" (9.6)
RH-2 or RHD-2	3" (76.2)	2 1/4" (57.2)	4 1/2" (114.3)	1 1/8" (35.0)	1 1/8" (47.6)	3/8" (16.0)
RH-3 or RHD-3	3 1/4" (95.2)	3 1/4" (82.5)	6 1/4" (158.7)	2" (50.8)	3 1/4" (79.4)	3/8" (19.0)
RH-4 or RHD-4	4 1/2" (114.3)	4" (101.6)	8 1/4" (208.0)	2" (50.8)	3 1/4" (79.4)	1" (25.4)

*Dimension "A" is for single deflection type RH hangers.

*Dimension "AD" is for double deflection type RHD hangers.



Type	Color Code	Max. Load		Deflection ins. (mm)	
				RH	RHD
RH-1 or RHD-1	BLUE	35	(15.8)	0.20 (5.0)	0.40 (10.1)
	BLACK	45	(20.4)		
	RED	75	(34.0)		
	GREEN	120	(54.5)		
RH-2 or RHD-2	BLACK	170	(77.0)	0.25 (6.35)	0.50 (12.7)
	RED	240	(109.0)		
	GREEN	380	(172.5)		
	GRAY	550	(249.7)		
RH-3 or RHD-3	BLACK	250	(113.5)	0.25 (6.35)	0.50 (12.7)
	RED	525	(238.3)		
	GREEN	750	(340.5)		
	GRAY	1250	(567.5)		
RH-4 or RHD-4	BLACK	1500	(681.0)	0.25 (6.35)	0.50 (12.7)
	RED	2250	(1021.5)		
	GREEN	3000	(1362.0)		
	GRAY	4000	(1816.0)		

TYPE RHC/RHDC

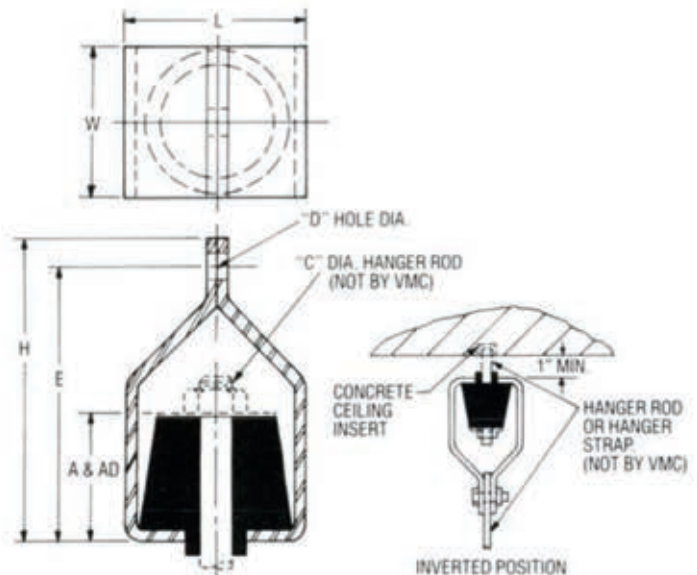


Dimensions: ins. (mm)

TYPE	L	W	H	A*	AD*	C	D	E
RHC-2 or RHDC-2	3" (76.2)	2 1/4" (57.2)	5 1/4" (146.0)	1 1/8" (35.0)	1 1/8" (47.6)	3/8" (16.0)	1 1/8" (17.6)	5 1/4" (130.2)

*Dimension "A" is for single deflection type RHC hangers.

*Dimension "AD" is for double deflection type RHDC hangers.



Type	Color Code	Max. Load		Deflection ins. (mm)	
				RHC	RHDC
RHC-2 or RHDC-2	BLACK	170	(77.0)	0.25 (6.35)	0.50 (12.7)
	RED	240	(109.0)		
	GREEN	380	(172.5)		
	GRAY	550	(249.7)		

TYPE RHE/RHDE

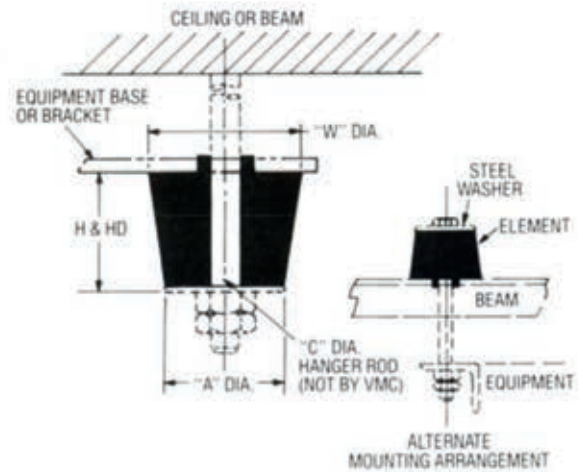


Dimensions: ins. (mm)

TYPE	W	H*	HD*	A	C
RHE 1 or RHDE 1	1 1/4" (44.4)	7/8" (22.4)	1 1/4" (31.7)	1 1/4" (31.7)	5/8" (9.6)
RHE 2 or RHDE 2	2 1/4" (60.4)	1 1/4" (31.7)	1 1/4" (44.4)	1 1/4" (44.4)	5/8" (16.0)
RHE 3 or RHDE 3	3 1/2" (89.0)	1 1/4" (44.4)	2 1/4" (73.3)	2 1/4" (63.5)	5/8" (19.0)
RHE 4 or RHDE 4	4" (101.6)	1 1/4" (44.4)	3" (76.2)	4" (101.6)	1" (25.4)

*Dimension "H" is for single deflection type RHE elements

*Dimension "HD" is for double deflection type RHDE elements



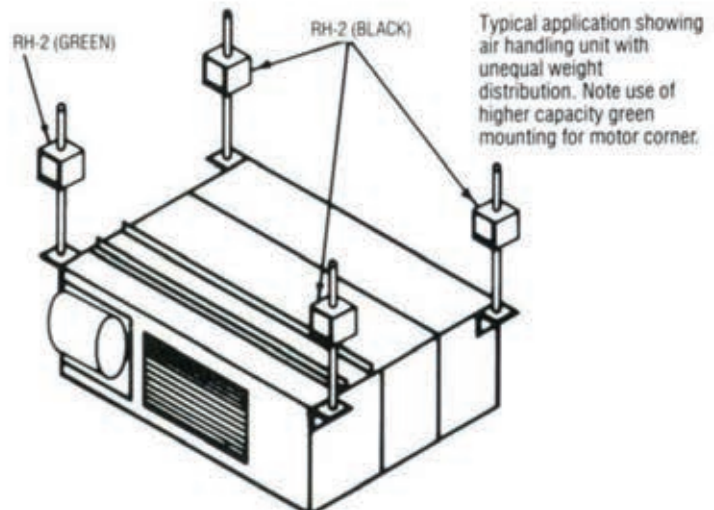
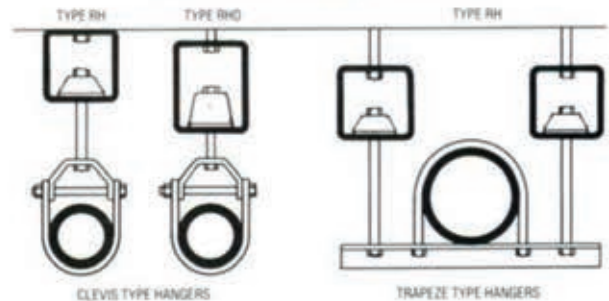
Type	Color Code	Max. Load		Deflection	
				ins. (mm)	
		lbs	(kg)	RH	RHD
RHE 1 or RHDE 1	BLUE	35	(15.8)	0.20 (5.0)	0.40 (10.2)
	BLACK	45	(20.4)		
	RED	75	(34.0)		
	GREEN	120	(54.5)		
RHE 2 or RHDE 2	BLACK	170	(77.2)	0.25 (6.35)	0.50 (12.7)
	RED	240	(109.0)		
	GREEN	380	(172.5)		
	GRAY	550	(249.7)		
RHE 3 or RHDE 3	BLACK	250	(113.5)	0.25 (6.35)	0.50 (12.7)
	RED	525	(238.3)		
	GREEN	750	(340.5)		
	GRAY	1250	(567.5)		
RHE 4 or RHDE 4	BLACK	1500	(681.0)	0.25 (6.35)	0.50 (12.7)
	RED	2250	(1021.5)		
	GREEN	3000	(1362.0)		
	GRAY	4000	(1816.0)		

HANGER SELECTION GUIDE

Pipe Size ins. (mm)	Pipe Schedule No.	Recommended Hanger Spacing ft. (cm)	Total Wgt Pipe Water Insulation lbs. (kg)	Fire Code Min. Rod Dia ins. (mm)	Type RH-RHD Size No.
1" (25.4)	40	7 (17.7)	21 (9.5)	5/8" (9.6)	1 Black
1 1/4" (31.7)	40	7 (17.7)	28 (12.7)	5/8" (9.6)	1 Black
1 1/2" (38.0)	40	9 (22.8)	45 (20.4)	5/8" (9.6)	1 Red
2" (50.8)	40	10 (25.4)	62 (28.0)	5/8" (9.6)	1 Red
2 1/2" (63.5)	40	11 (28.0)	100 (45.4)	1" (12.7)	2 Black
3" (76.2)	40	12 (30.5)	145 (65.8)	1" (12.7)	2 Black
4" (101.6)	40	14 (35.5)	256 (116.2)	1 1/4" (16.0)	2 Green
5" (127.0)	40	16 (40.6)	426 (193.4)	1 1/4" (16.0)	2 Gray
6" (152.4)	40	17 (43.2)	595 (270.0)	1 1/4" (19.0)	3 Green
8" (203.2)	40	19 (48.2)	1045 (474.4)	1 1/2" (22.4)	4 Black
10" (254.0)	40	20 (50.8)	1604 (728.2)	1 1/2" (22.4)	4 Red
12" (304.8)	40	20 (50.8)	2180 (989.7)	1 1/2" (22.4)	4 Red
14" (355.6)	30	20 (50.8)	2440 (1107.7)	1" (25.4)	4 Green
16" (406.4)	30	20 (50.8)	3000 (1362.0)	1" (25.4)	4 Green
18" (457.2)	30	20 (50.8)	3800 (1725.2)	1 1/4" (28.6)	4 Gray

Vibration hanger selection based on recommended hanger spacing and Fire Code tabulated rod sizes for Clevis type hangers. If valves, strainers, etc. occur in pipe run, this additional weight must be considered and hanger selection altered to suit.

RH & RHD HANGERS MAY BE LOCATED
IN THE RODS OR AT THE CEILING





The Vibration Control People...



Vibration Mountings and Controls Inc's ongoing product development, marketing and distribution prowess has made us a world-wide leader in the design and fabrication of vibration isolation components and damping materials used in the heating, ventilating, air conditioning, petrochemical, chemical, manufacturing, utility, construction and transportation industries.

Computer supported engineering and the sophisticated skills of the VMC craftsmen continue to insure correctly designed and accurately manufactured product reliability for the vibration isolation of heating, ventilating and air-conditioning pumps, fans and compressors, heavy rotating machinery, diesel engines and railroad, off road and military vehicles.



Vibration Mountings & Controls, Inc.

An Aeroflex, Inc. Company

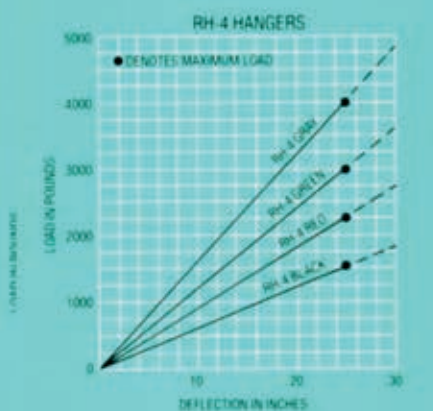
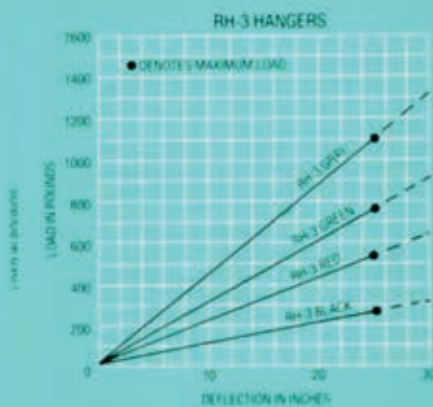
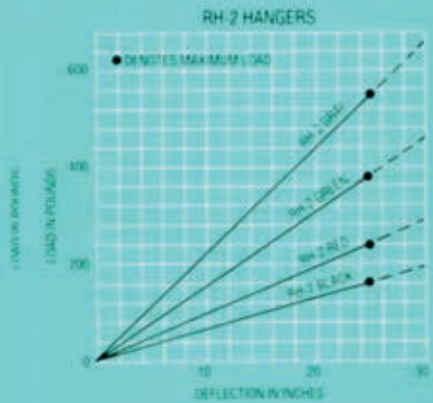
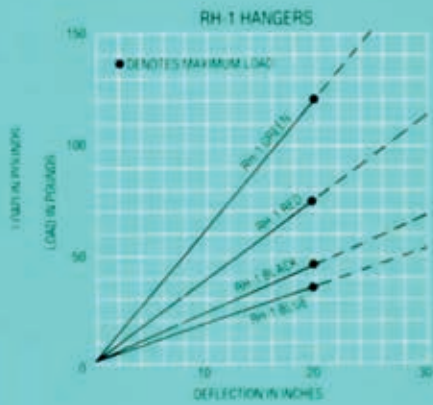
113 Main Street, Box 37, Bloomingdale, NJ 07403

Emtec Products Ltd., Unit L, Turnpike Way, High Wycombe, HP12 3TF
Tel: 020 8848 3031 www.emtecproducts.co.uk

Data sheets are issued in all good faith and the information given is current at the time of printing. EMTEC reserves the right to alter, amend or withdraw products as and when necessary. All rights to the products described in this data sheet are reserved to EMTEC.



Load Deflection Curves



Note: For series RHD Hangers, double the deflection shown for given load.